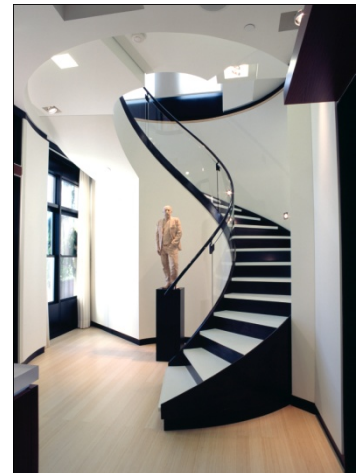


Residence High-Rise Penthouse Interior Atlanta, Georgia



Project Description

The raw space that we began with had multiple fixed base building conditions that made composing the interiors a challenge. The locations of dryer exhaust, vent stacks, and stair pressurization ducts were both manipulated within their engineering limits or used as compositional elements defining spaces and housing art pedestals in this raw space. The position of the base building core also drove the distribution of spaces within the unit. All of these base building conditions became opportunities for introducing compositional eccentricities.

Services Provided by MAKE

Architectural, Interior Design, FF&E, Engineering

Owner Statement

We had a fairly ambitious program and the notion that we wanted the place to be what we described as “soft modern”. We sought the services of an architecture firm that would work with us in an open collaborative fashion. Our experience with Jim Winer was as we had hoped, and we are thrilled with our new home.