



EMORY

EMORY VISUAL ARTS
BUILDING IMPROVEMENTS STUDY:
FILM - PHOTOGRAPHY - SCULPTURE - PAINTING - PRINTMAKING

EMORY UNIVERSITY
Visual Arts Building

700 Peavine Creek Drive, Atlanta GA 30322
Make3 Project No. 201327
December 31, 2014, REV 03/03/17

Make3
architecture / planning / design

1075 Brady Avenue NW Atlanta, Georgia 30318
404.876.5510
make3arch.com

Owner

Emory University

Nancy Bayly, Project Manager (2014 Study)
Planning, Design & Construction
nbayly@emory.edu
tel 404.727.0716

Christina Roberts, RA, Campus Planner
Campus Services PDC
christina.roberts@emory.edu
tel 404.727.7742

Dwight Raby, Senior Facilities Coordinator
Senior Facilities Coordinator, College of Arts & Science
draby@emory.edu
tel 404.712.8427

Leslie Taylor, Professor of Theater Studies
Theater Emory
ltaylor@emory.edu

Mathew Bernstein, Professor & Chair
Department of Film and Media Studies
mbernst@emory.edu

Jason Francisco, Associate Professor
Department of Film and Media Studies
Photography
jfrank9@emory.edu

Eddy Von Mueller, Lecturer
Department of Film and Media Studies
emueller@emory.edu

Emory University

Rob Schmidt Barracano, Lecturer
Department of Film and Media Studies
Digital Media Production
rob.barracano@emory.edu

Linda Armstrong, Chair
Visual Arts Department
larmstr@emory.edu

Kerry Moore, Director Undergraduate Studies
Visual Arts Department
kbmoore@emory.edu

Norman Wagner, Independent Printmaker
psycho@mindspring.com

Project Narrative

This study provides a program, conceptual layout, and estimate for renovations to the existing Visual Arts Building that will provide improved program space for the Visual Arts Department and the Department of Film and Media Studies. The document is an outgrowth of program data sheets provided by both Departments and multiple meetings with representatives from the two using departments, the College of Arts and Sciences, Planning Design & Construction, and Make3 architecture/planning /design.

A broad outline of the work is as follows:

- 1) Creating a Production Studio, Control Room and Whisper Room from the area previously used as a ceramics studio.
- 2) Creating a Green Screen Insert Stage and Green Screen Control Room from the existing Studio 105 and Control Room 104.
- 3) Creating an editing lab by combining the Lounge 124N, Video Edit 125N, Vending 102N, and Storage Room 123N.
- 4) Creating a Printmaking space from Painting and Drawing Room 122N.
- 5) Making lighting improvements to Painting/Drawing 118.
- 6) Making AV improvements to Painting/Drawing 118 and Sculpture 117.
- 7) Expanding the loading dock to accommodate storage and a dumpster pad.
- 8) Enhancements to Gallery 144N to improve acoustics, video display capabilities, and to provide the ability to hang exhibits from the ceiling.
- 9) Improving the photography studio with updated photography equipment, improved exhaust ventilation, and an enlarged classroom space.

This document includes drawings and program specifications. Numerical notes on the drawings are keyed to the program specifications.

Emory University hired Costing Services Group to estimate the cost of work based on the drawings and program specifications provided here. The estimate is included in the appendix.

Table of Contents

- 1 FLOOR PLAN - LEVEL 1 - DEMOLITION
- 2 PROPOSED FLOOR PLAN - LEVEL 1
- 3 PROPOSED RCP
- 4 VIEW OF COLLABORATION SPACE
- 5 VIEW OF AUDIO & STUDIO 1
- 6-15 PROGRAM SPECIFICATIONS
- 16 MECHANICAL & ELECTRICAL NARRATIVE

Project Team Directory

Architect
Make3 architecture/planning/design
1075 Brady Ave, NW
Atlanta, Georgia 30318
tel 404.876.5510

Jim Winer, Principal
jwiner@make3arch.com

Constanze Eckstein
ceckstein@make3arch.com

Architect - Film and Media
Hans Knutzen Associates, Inc.
11 Prall Place
Nyack, NY 10960
www.hka-tv.com

Hanz Knutzen
hkai@optonline.cet
tel 845.358.7667
cell 914.661.2219

Cost Estimator
Palacio Collaborative
400 Galleria Pkwy,
Suite 1500
Atlanta, Georgia 30339
tel 404.348.8040

Susan Smith
ssmith@palaciocollaborative.com

Equipment Designer
Diversified Systems Group
363 Market Street
Kenilworth, NJ 07033
www.diversifiedus.com

Scott Griffin, Senior President Engineering V
tel 908.245.4833, ext. 55124
cell 201.819.7507
sgriffin@diversifiedus.com



EMORY

Make3
architecture / planning / design

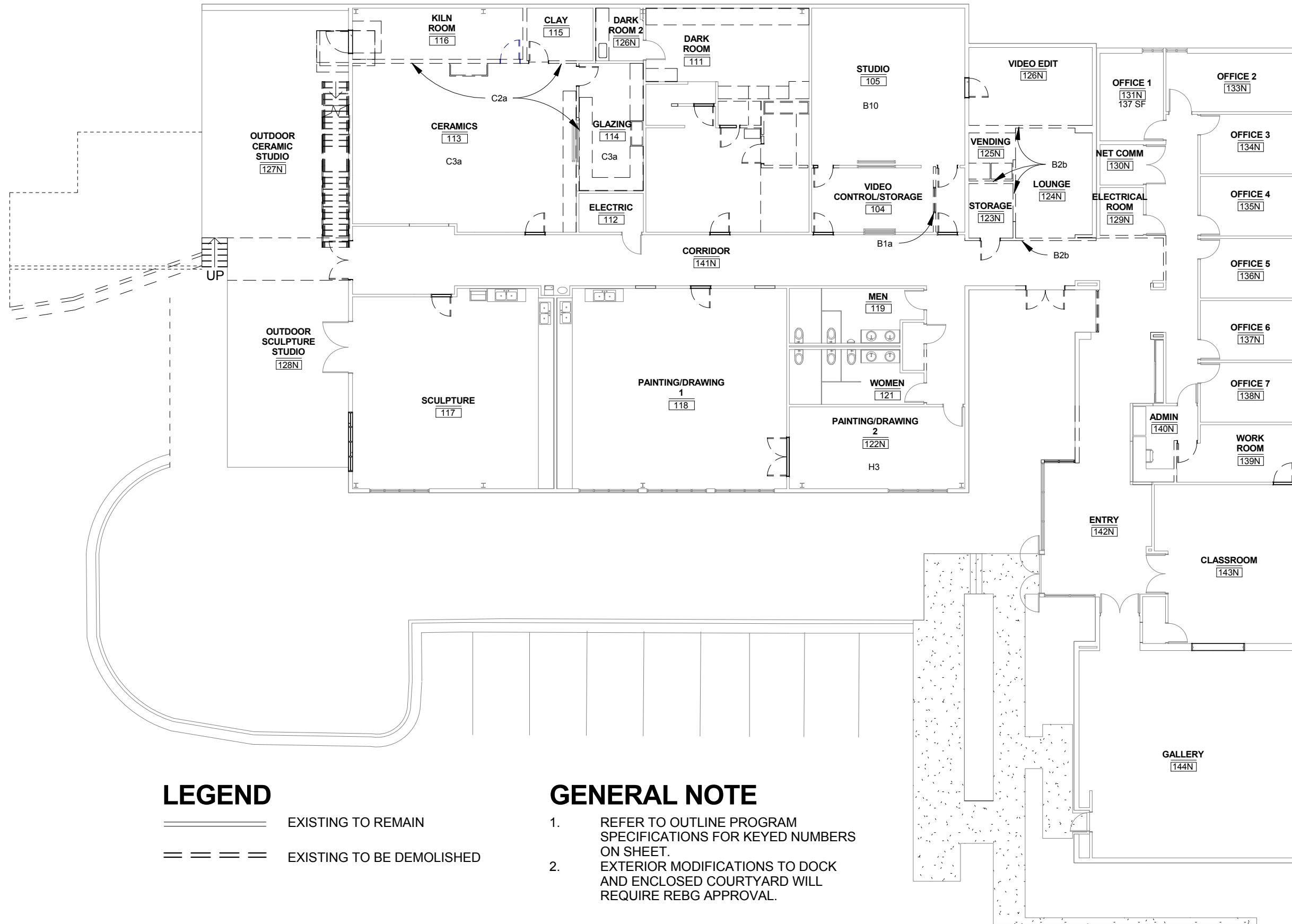
1075 Brady Avenue NW | 404.876.5510
Atlanta, Georgia 30318 | www.make3arch.com

EMORY UNIVERSITY
EMORY VISUAL ARTS

PROJECT INFO, TEAM, & TABLE OF CONTENTS

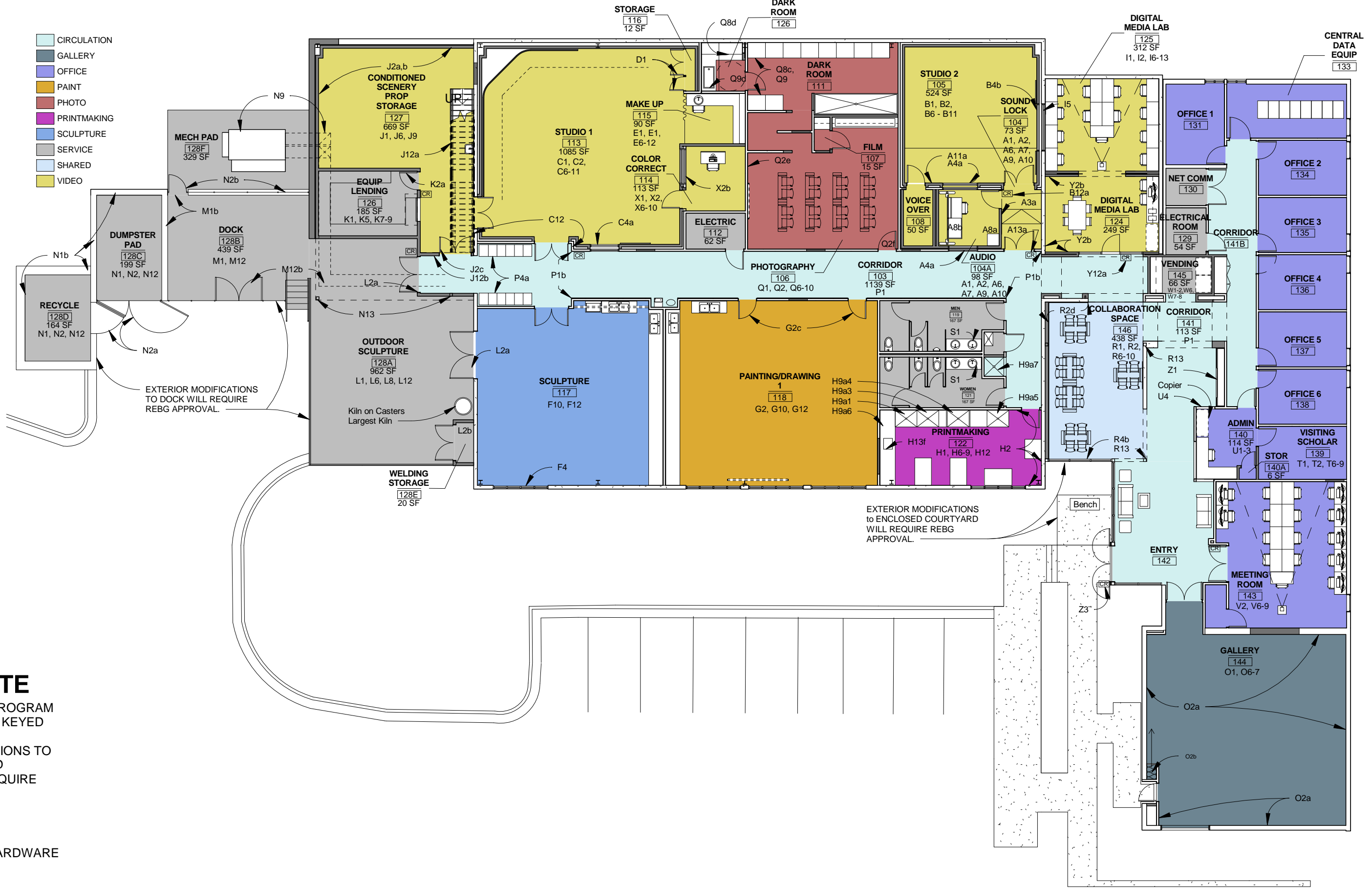
03.03.2017

TOC



ROOM PROGRAM SCHEDULE		
NO.	NAME	ACTUAL AREA ± (NSF)
103	CORRIDOR	1139 SF
104	SOUND LOCK	73 SF
104A	AUDIO	98 SF
105	STUDIO 2	524 SF
106	PHOTOGRAPHY	558 SF
107	FILM	15 SF
108	VOICE OVER	50 SF
111	DARK ROOM	305 SF
112	ELECTRIC	62 SF
113	STUDIO 1	1085 SF
114	COLOR CORRECT	113 SF
115	MAKE UP	90 SF
116	STORAGE	12 SF
117	SCULPTURE	968 SF
118	PAINTING/DRAWING 1	1131 SF
119	MEN	167 SF
121	WOMEN	167 SF
122	PRINTMAKING	353 SF
124	DIGITAL MEDIA LAB	249 SF
125	DIGITAL MEDIA LAB	312 SF
127	CONDITIONED SCENERY PROP STORAGE	669 SF
128A	OUTDOOR SCULPTURE	962 SF
128B	DOCK	439 SF
128C	DUMPSTER PAD	199 SF
128D	RECYCLE	164 SF
128E	WELDING STORAGE	20 SF
128F	MECH PAD	329 SF
129	ELECTRICAL ROOM	54 SF
130	NET COMM	43 SF
131	OFFICE 1	137 SF
133	CENTRAL DATA EQUIP	187 SF
134	OFFICE 2	140 SF
135	OFFICE 3	140 SF
136	OFFICE 4	140 SF
137	OFFICE 5	140 SF
138	OFFICE 6	140 SF
139	VISITING SCHOLAR	135 SF
140	ADMIN	114 SF
140A	STOR	6 SF
141	CORRIDOR	113 SF
141B	CORRIDOR	286 SF
142	ENTRY	376 SF
143	MEETING ROOM	552 SF
144	GALLERY	1121 SF
145	VENDING	66 SF
146	COLLABORATION SPACE	438 SF
Grand total: 46		14580 SF

- CIRCULATION
- GALLERY
- OFFICE
- PAINT
- PHOTO
- PRINTMAKING
- SCULPTURE
- SERVICE
- SHARED
- VIDEO



GENERAL NOTE

1. REFER TO OUTLINE PROGRAM SPECIFICATIONS FOR KEYED NUMBERS ON SHEET.
2. EXTERIOR MODIFICATIONS TO DOCK AND ENCLOSED COURTYARD WILL REQUIRE REBG APPROVAL.

LEGEND

CR CARD READER & HARDWARE

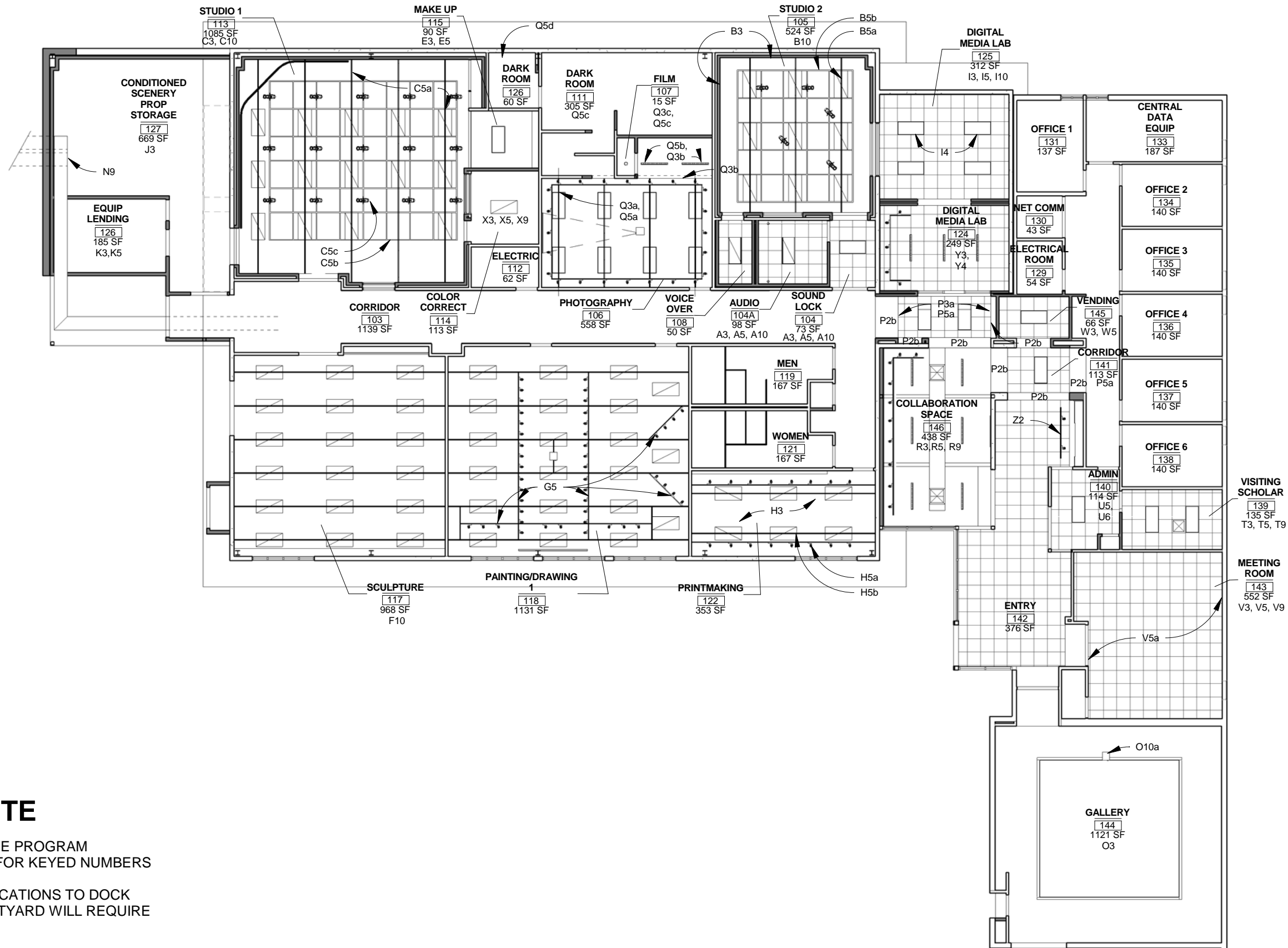
EMORY UNIVERSITY
Visual Arts Building

700 Peavine Creek Drive, Atlanta GA 30322
Make3 Project 201609
No.

2
PROPOSED FIRST FLOOR PLAN
1/16" = 1'-0"
12/31/14, REV 3/03/17

Make3
architecture / planning / design

1075 Brady Avenue NW Atlanta, Georgia 30318 404.876.5510
make3arch.com



GENERAL NOTE

1. REFER TO OUTLINE PROGRAM SPECIFICATIONS FOR KEYED NUMBERS ON SHEET.
2. EXTERIOR MODIFICATIONS TO DOCK AND ENCLOSED COURTYARD WILL REQUIRE REBG APPROVAL.

EMORY UNIVERSITY
Visual Arts Building

700 Peavine Creek Drive, Atlanta GA 30322

Make3 Project 201609
No.

3 PROPOSED FIRST FLOOR RCP

1/16" = 1'-0"
12/31/14, REV 3/03/17

Make3
architecture / planning / design

1075 Brady Avenue NW | 404.876.5510
Atlanta, Georgia 30318 | www.make3arch.com



Collaboration Space (146)



View of Audio (104A)



View of Studio 1 (113)

A. **Audio Room 104A, Sound Lock 104 & Voice Over 108:** The space will house a workstation. Students will execute composite and insert shots and supervise broadcast televisions style interviews and experiment with switchers and other digital tools for live production.

1. Flooring:
 - a. Raised Sound Isolation Floor. New Carpet
2. Walls & Doors:
 - a. Construct a sound barrier wall within Existing GWB for an STC 50 assembly. Infill existing doors, patch, and paint as req'd.
 - b. New doors to have an STC of 50.
3. Ceiling:
 - a. STC 50 ceiling lid with sheetrock finish. Drop a new 2x2 tile and grid.
4. Windows:
 - a. New to Studio 2 (105) and hall.
5. Lighting:
 - a. Change existing fluorescents to overhead LED lighting on dimmer
6. Power:
 - a. 4 outlets in 104A.
7. Data:
 - a. Hardwired and wireless broadband. 4 taps plus broadband.
8. Millwork and Furniture:
 - a. Rack for 4 hard drives,
 - b. 1 desk for sound equipment and monitors, 1 chairs.
9. HVAC: see EU narrative, ducts designed for minimum air sound and maximum room isolation.
10. AV:
 - a. See Diversified AV Narrative
11. Acoustical Requirements:
 - a. Acoustic padding or other sound proofing between control room and greenscreen/insert stage.
12. Special Instructions & Equipment:
 - a. Keypad/prox. card reader at entries.
13. Other: None

B. **Studio 2 105** (Current Studio 105): Space will be used to instruct students in preparing and recording material for use in digital composites and other digital post-production applications.

1. Flooring:

- a. Black or Grey Vinyl or sim, flat (high FF/FL rating - Epimax basis of design manu.)
 - b. Construct floating isolation floor above existing slab.
2. Walls:
 - a. Wall: Painted green screen color to composite specs.
 - b. Infill existing door 125N on east wall leading to existing room 125N (Existing Video Edit).
 - c. Build walls within existing walls for acoustically isolated room. STC 50.
 - d. Walls: Soundproofing and Deadening: STC 50 and NC 25
 1. Soften wall surface with "latex acoustical panels" preferred.
 3. Ceiling:
 - a. Soundproofing and Deadening:
 1. 4" of dead space with a suspended ceiling system to provide an STC 50 and NC 25. Acoustical panel ceiling set below and close to sound isolation ceiling.
 4. Windows:
 - a. See notes Audio Room 104A
 - b. Window to Video 125: STC 50
 5. Lighting:
 - a. Utility lighting grid: Raise existing, same grid as Studio 2
 - b. New Studio Lighting Grid: Below Utility Grid, as high as possible.
 1. Owner to provide cut sheets and layout.
 2. Suitable connections for remote control/dimmers.
 6. Power:
 - a. 120 and 4 at 240 volts.
 - b. Distribution layout will be drawn up by owner's engineer/studio expert.
 7. Data:
 - a. Hardwired and wireless
 - b. *One tap, with power and data connections, in the wall closest to the Video Lab.*
 8. Millwork and Furniture:
 - a. Movable ladder/stairs for rigging lights, see Diversified Equipment List
 9. HVAC:
 - a. Mitigate HVAC Sound, see Emory University HVAC narrative
 10. AV:
 - a. None, remove existing AV (equipment is obsolete, dispose of as e-waste)
 11. Acoustical Requirements:
 - a. see above

12. Special Instructions & Equipment:
 - a. Keypad/prox. card reader at entries.
 - b. see Diversified Equipment List

13. Other: None

C. **Studio 1 113** (Converted from Ceramics 113, Clay 115, and Kiln 116): Space will be used as a sound stage for student media productions, for instructional demonstrations in direction and lighting, for hands on exercises in production techniques.

1. Flooring:
 - a. Black or Grey Vinyl or sim, flat (high FF/FL rating - Epimax is just one manu.)
2. Walls:
 - a. Remove wall between existing rooms 113 and 114.
 - b. Soundproofing and Deadening:
 1. Construct sound attenuated walls within room.
 2. Soften wall surface with "latex acoustical panels" preferred.
3. Ceiling:
 - a. Leave existing flat ceiling in former space 114.
 - b. Soundproofing and Deadening:
 1. Current condition is batt/bagged insulation. Isolation from exterior sound/train essential. Provide 4" of dead space with a suspended acoustical panel ceiling and sound blankets above ceiling. STC 50
 - c. *Area that was formerly room 114 becomes color correct room, make-up, storage*
4. Windows:
 - a. STC 50. IN color correct room and to hall.
5. Lighting:
 - a. Utility lighting grid: Raise existing Unistrut system and connected utility lights as high as ceiling will allow.
 - b. New Pipe Grid (hung below utility light system as high as ceiling will allow). *The grid should be constructed of 1.5" Schedule 40 steel pipe or the equivalent pipe able to support a Live Load of 30 lbs. The grid quadrants should be 3 or 4 feet square and the perimeter anchor points for both levels of the grid should be attached directly to walls or hung from a beam by a suitably heavy Clevis Hanger. If possible, the perimeter of the grid should be constructed of Schedule 80 steel pipe to permit the setting of larger instruments. C-Clamps will be needed for mounting; a supply of perhaps 40 will equip all spaces in the building. Suitable conduit or similar hardware will be required for managing cables for luminaires. Ideally, outlets can be set*

higher on the walls for the lights, on separate fuses, to improve distribution in the space.

- c. *Studio lights: see Diversified Equipment List.*
- d. Suitable connections for remote control/dimmers.

6. Power:

- a. Widely distributed 120/240 volt.
- b. Distribution layout will be drawn up by owner's engineer/studio expert.
- c. See lighting grid

7. Data:

- a. Install T3 or Other High Speed Tap
- b. Quantity: *Two taps, with power and data connections would be useful, on the wall closest to the Photo Area/Darkroom, to permit transferring data to the Editing Lab and potentially using laptops for lighting and camera control in future iterations*

8. Millwork and Furniture: None

9. HVAC: See Emory University HVAC narrative

- a. Mitigate HVAC Sound
 1. New ductwork to be sized and designed to minimize air noise and maximize sound isolation.
 2. user to have temperature control with option to shut system off

10. AV: See Diversified Equipment List

11. Acoustical Requirements:

- a. See above

12. Special Instructions & Equipment:

- a. Keypad/prox. card reader at entries.

13. Other: None

D. **Storage 116:**

1. 3 solid core wood doors, adjustable shelving unit, lockable.

E. **Make-up 115:**

1. Flooring:
 - a. Same as studio
2. Walls:
 - a. Soundproofing and Deadening:
 1. Same as studio.
 2. Soften wall surface with "latex acoustical panels"
 - b. Curtain for full width of opening.

3. Ceiling:
 - a. Soundproofing and Deadening:
 1. Add STC 50 batts above flat ceiling.
 2. Soften ceiling to NC 25 (acoustical tiles)
4. Window: None
5. Lighting:
 - a. Change existing fluorescents to overhead LED lighting on dimmer.
 - b. Provide 3200 K lighting
6. Power:
 - a. 4 outlets to support work stations.
7. Data:
 - a. Hardwired and wireless broadband. 4 taps plus broadband.
8. Millwork and Furniture:
 - a. Continues base cabinet with lockable drawer units and knee space at sink.
 - b. Makeup mirror above sink. Continuous lockable wall cabinets with 2 adjustable shelves each.
9. HVAC and Plumbing:
 - a. See Emory University Narrative. Same specs as studio
 - b. Make-up sink
10. AV: None
11. Acoustical requirements:
 - a. see above
12. Special Instructions & Equipment:
 - a. none.

F. Sculpture 117:

1. Flooring: Existing
2. Walls: Existing
3. Ceiling: Existing
4. Windows: Existing
 - a. Add shades to darken room (same as Painting/Drawing 118).
5. Lighting: Existing
6. Power: Existing
7. Data: Existing
8. Millwork and Furniture: Existing
9. HVAC: Existing
10. AV:

- a. Infrastructure for motorized screen, power for AV lectern, box for AV cables (note: very dusty environment, no built in projector, portable projector will be used)

11. Acoustical Requirements: None

12. Special Instructions & Equipment:

- a. Move existing welding equipment outside.

13. Other: None

G. Painting & Drawing 118:

1. Flooring: Existing

2. Walls: Existing

- a. Paint existing
- b. Infill where door was removed for relocation
- c. *Create 2 new door openings 15'-0" apart to meet code. Both doors are relocated (one from room 104 and the entry door from this room 118). (Rev 11/17/14)*

3. Ceiling: Existing

4. Windows: Existing

5. Lighting:

- a. Add cluster of spots/floods in center of studio and spots/floods running in front of windows. For still life and model set ups.

6. Power: Existing

7. Data: Existing

8. Millwork and Furniture: Existing

9. HVAC: Existing

10. AV

- a. Infrastructure for motorized screen, AV lectern, box for AV cables

11. Acoustical Requirements: None

12. Special Instructions & Equipment:

- a. Spray Booth: Paasche Spray Booth Model BBF-2. Chicago Airbrush Supply

13. Other: None

H. Printmaking 122:

1. Flooring: chemical resistant epoxy paint

2. Walls:

- a. Paint Existing
- b. Remove double doors to 118 and infill with a wall. (rev 11/17/14)

3. Ceiling:

- a. Remove grid and ACT. Expose \$ paint structure overhead.
- 4. Windows: Existing
- 5. Lighting:
 - a. Add floods to illuminate countertops and presses.
 - b. Utility lighting grid: install Unistrut system and connected utility lights.
- 6. Power:
 - a. As required for new equipment
- 7. Data:
 - a. Smart room, wireless (any a/v equip?)
- 8. Millwork and Furniture:
 - a. Provide a \$5,000 allowance for built in lockable storage.
 - b. Rolling tables –FFE line item
 - c. Flat files remain in Print studio
- 9. HVAC & Plumbing:
 - a. Plumbing and associated millwork;
 - 1. Acid dilution sink, 32"x42"
 - 2. Acid dilution tank, below counter, connect each sink to tank
 - 3. Water rinse sink, 32"x42"
 - 4. Washout sink with ceiling, side, and rear splash guards, 32"x42"
 - 5. Paper dampening sink, 32"x42"
 - 6. 36" deep fabricated counter made from chemically resistant material
 - 7. Acid emergency shower, 37"x40"x90" unit
 - b. Ventilation for printmaking
 - 1. Final design will require specific information on processes, recommendations from Emory University EHS to determine chemical processes and associated ventilation needs, and MEP design.
 - 2. Include 3, 1200 CFM individually switched bench type ventilation hoods, each with 14" diameter epoxy coated steel ducts, exhaust through roof directly above hoods (note: provide adequate exhaust velocity to prevent exhaust from settling on and corroding roof). The building is currently 1200 CFM positive. Provide a new mechanical system with conditioned outside air to serve the printmaking studio and provide makeup air for exhausted air.
- 10. AV: None
- 11. Acoustical Requirements: None
- 12. Special Instructions & Equipment (EU to provide cut sheets)
 - a. Litho and etching press
 - b. Small hand press: no power.
 - c. Multi-purpose electric Charles Brand Press bed: 3'x5' (in place now).

- d. Acid dilution tank for the print room (under counter)
- e. Press bed blankets –EU to provide cut sheets.
- f. Rosin Box, approx. 20" w x 16.5" d x 41" h
- 13. Other:
 - a. EU to consult with printmaker on program for above.

- I. **Digital Media Lab 125:** (Combine Rooms 124 Storage, 124N Lounge, 102N Vending, 125N Editing) The space will be used by students for non-linear video editing, color correction, DVD & Web Authoring and other computer assisted media production tasks. 13 computer work stations for students enrolled in courses with a production component.
 - 1. Flooring: Carpet
 - 2. Walls:
 - a. Close off existing door 125N on east wall leading to existing room 105 (Existing Studio).
 - b. Cover walls in acoustic panels or other soundproofing.
 - 3. Ceiling:
 - a. New 2x2 grid and ACT.
 - b. Acoustical blankets or other soundproofing
 - 4. Lighting:
 - a. New 2x2 direct/indirect Fluorescent
 - 5. Window: STC 50, with sliding shutters on studio side.
 - 6. Power:
 - a. 120V for each work station
 - 7. Data:
 - a. T3 or other high speed. 13 taps, 1 per station.
 - 8. Millwork and Furniture:
 - a. 13 purchased work stations minimum at 3'-0" ea. min and 13 chairs. White board paint: entire north wall
 - b. Humanscale or other mounting for 2 monitors each work station.
 - 9. HVAC:
 - a. New systems, see Emory University mechanical narrative.
 - b. See
 - 10. AV:
 - a. See Diversified Equipment List
 - 11. Acoustical requirements:
 - a. Acoustical paneling or other sound proofing preferred.
 - 12. Special Instructions & Equipment:
 - a. Editing equipment. Provided by campus computer vendors.

13. Other: None

J. **Conditioned Scenery Prop Storage 127:** Enclosed under existing roof (use existing sprinkler system and lights).

1. Flooring:

- a. Existing concrete slab.
- b. Expand slab to west as required to provide slab edge that will allow new exterior wall to align with steel frame at end of bay.
- c. Footing: provide new footing along west wall and at return to north wall; approx. 3'-0"x1'-0" w/ 4 #4 rebar each way.
- d. Mezzanine above Equipment Center 126: designed for 100 PSF LL floor.

2. Walls:

- a. New exterior walls. 6" metal stud, dens glass and stucco on exterior, batt insulation, impact resistant drywall on interior.
- b. Provide short wall between low loading dock roof and high main roof to enclose and condition space.
- c. New 8'-0" x 10'-0" HM door and frame.

3. Ceiling:

- a. Clean existing

4. Windows: None

5. Lighting: Existing

6. Power:

- a. Provide 2 duplex outlets at each new wall.

7. Data: None

8. Millwork and Furniture: None

9. HVAC:

- a. Provide minimal HVAC to control temperature and humidity.

10. AV: None

11. Acoustical Requirements: None

12. Special Instructions & Equipment:

- a. Replace existing exterior stair to mech. New stair to have greater number of risers in first run to get to mezzanine storage.
- b. Keypad/prox. card reader at entries.

13. Other: None

K. **Equipment Center 126:**

1. Flooring: Existing concrete sealed.

2. Walls:

a. HM door and frames at 3'-0"x7'-0". Remove CMU and reinforce header.

3. Ceiling: exposed structure

4. Windows: None, roll up door at transaction counter.

5. Lighting: Utility

6. Power:

a. As required for Kiln (see Special Instructions and Equipment).

7. Data: 2 data/comm.

8. Millwork and Furniture:

a. Continuous work surface, knee space below, adjustable shelves above counters.

9. HVAC: New

10. AV: None

11. Acoustical Requirements: None

12. Special Instructions & Equipment: None

13. Other: None

L. **Outdoor Sculpture 128A:** See I above

1. Flooring: Expand existing elevated concrete work area to west. Install new dock bumpers

2. Walls:

- a. Expand existing floor to corridor 103. Install new 6'-0" x 8' HM doors in HM frame.
- b. Build a new enclosure for welding storage to include 2, 8" CMU walls at 32" deep by 7'-0" tall (reinforce two vertical block cores with one #4 rebar and mortar, dowel rebar into slab), provide a diamond mesh metal grill ceiling, provide a pair of 8'-0" wide x 6'-8" tall HM doors and frame, lockable).

3. Ceiling: Existing

4. Windows: Existing

5. Lighting: Existing

6. Power: Existing and add:

a. As required for Kiln (see Special Instructions and Equipment).

7. Data: None

8. Millwork and Furniture:

a. Welding tables (EU to provide cut sheet)

9. HVAC: None

10. AV: None

11. Acoustical Requirements: None

12. Special Instructions & Equipment:

- a. Welding equipment outside. Enclosed lockable storage.
 - b. Install kiln (provide necessary utilities) to area under existing upper stair landing.
13. Other:
- a. New 6" HSS and footing to support mezzanine above.

M. Expanded Loading 128B: Expand loading dock.

- 1. Flooring:
 - a. CIP concrete
 - b. Retaining wall: Average of 3'8"H above footing x 1'-0" wide CIP. Assume 3'x1' footing.
 - c. Remove trees as req'd
- 2. Walls: None
- 3. Ceiling: None
- 4. Windows: None.
- 5. Lighting: None
- 6. Power: None
- 7. Data: None
- 8. Millwork and Furniture: None
- 9. HVAC: None
- 10. AV: None
- 11. Acoustical Requirements: None
- 12. Special Instructions & Equipment:
 - a. Reroute existing foundation and downspout drain pipe.
 - b. Dock Bumpers
 - c. Operable guard rail gates to match existing
- 13. Other: Exterior modifications to dock with require REBG approval.

N. Dumpster Pad 128C & Recycling Enclosure 128D & Mechanical Pad 128F

- 1. Flooring:
 - a. CIP concrete
 - b. Retaining wall: Average of 3'8"H above footing x 1'-0" wide CIP. Assume 3'x1' footing.
 - c. Remove trees as req'd
- 2. Walls:
 - a. Operable gates for screening.
 - b. Screen wall and gate.
- 3. Ceiling: None

- 4. Windows: None.
- 5. Lighting: None
- 6. Power: None
- 7. Data: None
- 8. Millwork and Furniture: None
- 9. HVAC: New 40 ton DX RTU 2 on slab, router duct into a chase constructed in Storage Room 127, up vertically and then horizontally in a mezz. chase tight to exterior wall and then into existing central mechanical spine centered above main EW hall, enclose N and w side of concrete pad in chain link. S side of concrete pad in a louvered mech. equipment screen with a gate.
- 10. AV: None
- 11. Acoustical Requirements: None
- 12. Special Instructions & Equipment:
 - a. Reroute existing foundation and downspout drain pipe.
 - b. Provide hose bib
 - c. Provide dumpster drain
 - d. Provide three bollards to prevent dumpster from hitting retaining walls
- 13. Other: None

O. Gallery 144:

- 1. Flooring:
 - a. Add a black sprung dance floor. Provide transitions at doors. Remove and shorten large swinging walls, then reinstall.
- 2. Walls:
 - a. Specialty Projector Paint all walls
 - b. Provide pocket with doors and fabric curtains to deaden space for art projects involving audio.
- 3. Ceiling:
 - a. Specialty Projector Paint all
 - b. Remove sheetrock, install suspension system, 3/4" plywood, and sheetrock to allow hanging art installations (option: hang unistrut grid below finish ceiling, leave exposed for hanging art installations)
- 4. Windows: Existing.
- 5. Lighting: Existing
- 6. Power: Existing plus as req'd for AV
- 7. Data: As req'd for AV
- 8. Millwork and Furniture: None
- 9. HVAC: Existing
- 10. AV:

- a. New projector and screen
- 11. Acoustical Requirements: None
- 12. Special Instructions & Equipment: None
- 13. Other: None

P. Corridor 103, 141:

- 1. Walls:
 - a. Infill walls and repaint halls as required by door additions and removals and new work generally.
 - b. New homosote panels to 8'-0" AFF.
- 2. Ceiling:
 - a. New 2x2 ACT ceilings.
 - b. New GWB soffits.
- 3. Lighting:
 - a. New 2x4.
- 4. Millwork and Furniture:
 - a. 12 new lockers.

Q. Photography 106, Film 107, Dark Room 111, Dark Room 126:

- 1. Flooring:
 - a. New sealer and patch at floor under removed walls.
- 2. Walls:
 - a. New construction as shown.
 - b. Painted black in all but 106. 106 to be white
 - c. New paint at all walls
 - d. Re-adhere lose homosote tac walls
 - e. New homosote tac walls
 - f. Room 107: New In-swinging Door. Seal door frame and threshold to prevent light penetration (verify swing with ADA compliance officer).
 - g. Extend walls between 111 and 106 to structure to accommodate removal of ceiling per 3.a.
- 3. Ceiling:
 - a. Room 106: Remove ACT grid and replace with 2x4 lights hung from Unistrut to match typical studio spaces.
 - b. Repair existing sheetrock ceiling and add two, 1'x4' lights.
 - c. Add hard ceiling in new Film Room 107.
- 4. Window: NA
- 5. Lighting:

- a. Room 106: Hang existing 2x4's on unistrut (see 3.a.). Reinstall existing track.
- b. Room 106: Hang 2, 1'x4' lights.
- c. Room 107: Install standard can light
- d. Room 126: Remove existing lighting. Add standard halogen dark room safe light to match existing in room 111. Add a dedicated green light to ceiling with foot pedal control.

- 6. Power:
 - a. As required to accommodate new enlarging stations and new spaces.
- 7. Data:
 - a. As required to accommodate remodeled 1076 and 107N
- 8. Millwork and Furniture:
 - a. Room 106: 6'-0" base cabinet with built in light table top (light table plexi with daylight balanced fluorescent tubes below). 6'-0" wall cabinet above with adjustable shelves and lock. All laminate. 8 new 18"x60" flip tables with 16 new chairs.
 - b. Room 107: Provide lockable base and wall cabinet with doors and adjustable shelves. Black laminate.
 - c. Room 111: New enlarging stations. 2'-10" tall base cabinet each approximately 3'-0" wide (field verify). Base cabinet to serve as student, T2lockers and be divided into 4 lockable cabinet units approximately 1'6" wide and 1'-3" high. Two enlarging stations to have adjustable counter heights with base locker cabinets to be removable for ADA accommodations. Counters to be black chemical resistant material with black chemical resistant ¾" thick material to serve as dividers between stations.
 - d. Room 126N: Provide 2'-0" deep shelving unit, 4 shelves high, at side/exterior wall.
- 9. HVAC & Plumbing
 - a. Sink Removal (salvage per Emory instructions):
 - 1. Rooms: 108, 111, 126N
 - b. Hood Removal (salvage per Emory instructions):
 - 1. Room 111
 - c. Dark Room 111 Sink, Fittings, and Hood:
 - 1. New SS sink, 30" minimum interior dimension front to back, 6" deep, fabricated for width of wall approximately 8'-3". SS backsplashes on all 3 sides (assume 4" splash). *California Stainless* is an owner's preferred company.

2. Wall mounted faucets at each sidewall end of sink. Dark Room. Faucets with thermometer that measures water temperature while delivered (clockwise off/counterclockwise cold to hot).
3. Provide fume hood and roof fan for full width of sink based on continuous chemical off-gassing.

d. Room 126:

1. New SS sink, 36" minimum interior dimension front to back, 6" deep, fabricated for width of wall approximately 14'-3". SS backsplashes on all 3 sides (assume 4" splash). *California Stainless* is an owner's preferred company.
2. Dark room faucet with thermometer that measures water temperature while delivered (clockwise off/counterclockwise cold to hot).
3. Provide ventilation along wall with low steady intake and roof fan for full width of sink based on occasional chemical off-gassing.

e. New systems see Emory University Narrative

10. AV:

- a. Existing screen to remain
- b. Provide and install new projector

11. Acoustical requirements: None

12. Special Instructions & Equipment: None

13. Other: None

R. Collaborate Space 146 (Add Alternate: enclosure of existing courtyard.)

1. Flooring and foundation:

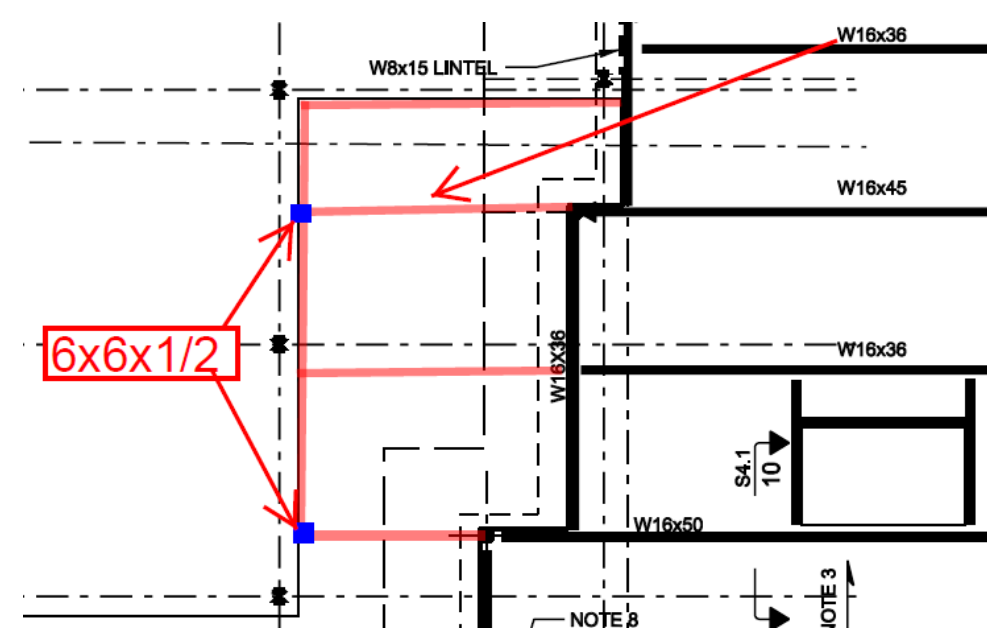
- a. Demolish existing terrace slab.
- b. Excavate for two 2.5'x2.5'x1' footings for new roof steel tube supports.
- c. Install new polished and sealed floor slab.

2. Walls:

- a. Demo existing exterior walls as shown.
- b. Install two 6x6x1/4 steel tubes against west wall. Conceal tubes in new metal stud and sheetrock wall constructed in front of existing split faced block wall.
- c. Fur out over existing split face block.
- d. Install homosote to 8'-0" AFF.

3. Roof and Ceiling:

- a. Provide new roof structure and roofing (perimeter W16x36 with 3, W16x36's spanning EW. Welded metal deck. New insulation and flat roofing.
- b. Open to structure



4. Windows:

- a. Infill windows on west wall of Printmaking 122N with split face block salvaged from demolition.
- b. New storefront on south wall of new courtyard enclosure.

5. Lighting:

- a. 4'-0" up down LED linear pendants.
- b. Wall washers with tracks.

6. Power: All new, provide adequate power for student work area.

7. Data: As req'd for all new space. Data/Comm. ports.

8. Millwork and Furniture: Flexible tables and seating

9. HVAC: New, see Emory University narrative. Exposed ductwork.

10. AV: See diversified equipment list.

11. Acoustical Requirements: None

12. Special Instructions & Equipment: None

13. Other: add columns @ existing beam.

S. Men 119 & Women 121:

1. Vanity Replacement: Provide 3200 K lighting to two positions in M and F toilets. One hand basin in each to have hand-shower with diverter for hair-washing and add new trap. Power for hair dryers. Backlight position. Provide solid wall separation to sanitary fixtures adjacent to make-up. Update lighting for make-up.

T. Visiting Scholar 139:

1. Flooring:
 - a. New carpet.
2. Walls:

- a. Demo west wall, construct new wall, reuse existing entry door.
- 3. Ceiling:
 - a. Reconfigure existing ACT.
- 4. Windows:
 - a. NA
- 5. Lighting:
 - a. Reconfigure existing.
- 6. Power: provide adequate power for office.
- 7. Data: 2 new Data/Comm. ports.
- 8. Millwork and Furniture: Office furniture
- 9. HVAC: Existing, see Emory University narrative. Exposed ductwork.
- 10. AV: NA.
- 11. Acoustical Requirements: NA
- 12. Special Instructions & Equipment: None
- 13. Other: None

U. Admin 140:

- 1. New storage closet and door
- 2. Shorten work surface for new copier
- 3. New carpet tile.
- 4. Wall opening near art library shelves.
- 5. Modify existing ACT ceiling as required
- 6. Existing light in ceiling to remain.

V. Meeting 143

- 1. Flooring: existing
- 2. Walls:
 - a. Infill large door to Gallery 144.
 - b. Infill door to room 139.
 - c. Repaint room
- 3. Ceiling:
 - a. Existing.
- 4. Windows:
 - a. Existing
- 5. Lighting:
 - a. Remove existing wall washers and light track; all other in ceiling to remain.
- 6. Power: provide adequate power for new configuration. Trench floor for two floor boxes.

- 7. Data: 2 new Data/Comm. ports. Trench floor for two floor boxes.
- 8. Millwork and Furniture:
 - a. Remove existing base cabinet.
 - b. All new furniture.
- 9. HVAC: Existing, see Emory University narrative. Exposed ductwork.
- 10. AV: NA.
- 11. Acoustical Requirements: NA
- 12. Special Instructions & Equipment: None
- 13. Other: None

W. Vending 145N:

- 1. Flooring: existing concrete, reseal.
- 2. Walls:
 - a. Metal studs and sheetrock
- 3. Ceiling:
 - a. New ACT.
- 4. Windows:
 - a. NA
- 5. Lighting:
 - a. 2x4.
- 6. Power: As needed for vending machines, sink, microwave, below counter refrigerator.
- 7. Data: NA.
- 8. Millwork:
 - a. Base Cabinet: Base cabinet, 2' refrigerator, drawer unit.
 - b. Wall Cabinet: Lockable, full width
 - c. Below counter refrigerator
 - d. Counter Microwave
 - e. Coffee maker.
 - f. Full height lockable storage cabinet facing Corridor 141B
- 9. HVAC: Existing, see Emory University narrative. Exposed ductwork.
- 10. AV: none
- 11. Acoustical Requirements: NA
- 12. Special Instructions & Equipment: None
- 13. Other: None

X. Color Correct 114:

- 1. Flooring:

- a. Same as studio
- 2. Walls:
 - a. Soundproofing and Deadening:
 - 1. Same as studio.
 - 2. Soften wall surface with “latex acoustical panels”
 - b. Window: STC 50. IN
- 3. Ceiling:
 - a. Soundproofing and Deadening:
 - 1. Add STC 50 batts above flat ceiling.
 - 2. Soften ceiling to NC 25 (acoustical tiles)
- 4. Lighting:
 - a. Change existing fluorescents to overhead LED lighting on dimmer.
 - b. Provide 3200 K lighting
- 5. Power:
 - a. 4 outlets to support work stations.
- 6. Data:
 - a. Hardwired and wireless broadband. 4 taps plus broadband.
- 7. Millwork and Furniture:
 - a. 1 desk for equipment and monitor, 1 chair.
- 8. HVAC and Plumbing:
 - a. See Emory University Narrative. Same specs as studio
- 9. AV: See Diversified equipment list
- 10. Acoustical requirements:
 - a. see above
- 11. Special Instructions & Equipment:
 - a. none.

Y. Digital Media Lab 124:

- 1. Flooring: Carpet
- 2. Walls:
 - a. New storefront to corridor 103.
 - b. New homosote to 8'-0" AFF.
 - c. Cover walls in acoustic panels or other soundproofing.
- 3. Ceiling:
 - a. ACT.
 - b. Acoustical blankets or other soundproofing
- 4. Lighting:
 - a. 3 linear 4' pendants.

- b. Wall washers on tracks.
- 5. Window: N/A
- 6. Power:
 - a. 120V for each work station and equipment.
- 7. Data:
 - a. T3 or other high speed. 1 tab/station.
- 8. Millwork and Furniture:
 - a. 1 purchased work stations minimum at 3'-0" ea. min and 2 chairs.
 - b. Large work table with 6 chairs.
 - c. Humanscale or other mounting for 2 monitors work station.
- 9. HVAC:
 - a. New systems, see Emory University mechanical narrative.
- 10. AV:
 - a. See Diversified Equipment List
- 11. Acoustical requirements:
 - a. Acoustical paneling or other sound proofing preferred.
- 12. Special Instructions & Equipment:
 - a. Keypad/prox. card reader at entry.
 - b. Printer and scanner.
- 13. Other: None

Z. Entry 142:

- 1. Art library shelves with glass sliding doors and locks.
- 2. Move existing wall washers with track to illuminate art library shelves; remaining lights in ceiling to remain.
- 3. Card Reader at entrance.
- 4. Exterior modification to enclose courtyard at Entry will require REBG approval.

Emory Visual Arts Feasibility StudyDate: 02/01/17Revision: OriginalPrepared By: Chris Fox, (404)783-3564

Local, Federal or State codes, and unless otherwise contradicted herein, the Emory University Design Standards shall apply. The intent of this project is to provide renovated space for the visual arts department.

The Current Space is comprised of an original 1995 building and a later 2005 addition. The 1995 building HVAC is provided from 6 residential style split DX residential style units with gas heat. The exhaust air is individually exhausted from the rooms. This method of delivery causes humidity and potential mold issues in the building as the Exhaust is not tied into the supply and the outside air is brought in regardless of a call for capacity. The 2005 addition is a 30 ton rooftop VAV DX unit with gas heat that appears to be performing well.

The proposed changes will result in the removal of the existing systems in the 1995 construction and additions to the 2005 construction.

The existing 30 ton RTU 1 can be reused and rebalanced to provide the required 20 tons. Due to load changes in many of the spaces, we will require approximately 9 new Electric heat fan parallel PIU's and ductwork. The decrease in tonnage is due to the removal of the Meeting room from this unit.

On the 2005 section of the building, a new 40 ton DX RTU 2 unit with electric humidifier will be mounted on a slab to the plan west of the building and ducted into the building via the existing service corridor. Electrical service and control wiring will be provided via underground conduits.

Approximately 10 new Electric heat fan parallel PIUs and ductwork shall be required. Mounting of the unit outside on a pad will be required to meet the sound requirements of many of the rooms. An acoustical plenum shall be considered on the discharge. All ductwork shall be designed as self-balancing, sized for lower velocities in accordance with the desired NC rating, and all low pressure ducts are to be lined with elastomeric foam insulation. Return shall be a ducted return, internally lined above the spaces with elastomeric foam, and will have a minimum of two turns for a "z" type offset for sound considerations.

The Prop/Equipment room unit will be supplied from a dedicated, pad mounted, 4 ton DX heat pump with Low and High ambient options and an electric humidifier. Pad is to be located near RTU 2.

The Video Edit room unit will be supplied from a dedicated Roof top mounted 5 ton DX heat pump with Low and High ambient options and an electric humidifier. It will be mounted on the 2005 section of roof and ducted over into the audio room with the same configurations mentioned for RTU 2.

The Audio room will operate 24/7 and have a dedicated 2 ton Heat pump with low ambient and high ambient kits. It will be mounted on the 2005 section of roof and ducted over into the audio room with the same configurations mentioned for RTU 2.

Emory University
301 FM Drive
Atlanta, Georgia 30322
An equal opportunity, affirmative action university

Tel 404.727.1764
Fax 404.727.2127

1

EMORY UNIVERSITY
Visual Arts Building

700 Peavine Creek Drive, Atlanta GA 30322
Make3 Project No. 201609
December 31, 2014, REV 03/03/17

The new Meeting room unit will be supplied from a dedicated roof top mounted, 4 ton DX heat pump with Low and High ambient options and an electric humidifier.

The new server room unit will be supplied from a dedicated roof top mounted, 7.5 ton DX heat pump with Low and High ambient options and an electric humidifier.

Controls shall be in accordance with Emory Design Standards. Sequences shall include night set back, supply air pressure reset, supply air temperature resets and morning warm up. CO2 sensors should be considered for meeting rooms and rooms operating 24hours a day.

Electrical Infrastructure:

The existing electrical service consists of a 225 kVA Emory-owned overhead three-phase 4160-480V Utility transformer and is properly sized for the proposed renovation of this building. The utility service currently terminates in a 400A Main panel-HA installed in the original 1994 construction and this panel and associated electrical equipment is in acceptable condition. Also located in the main electrical room is a double-width 120/208V panel-LA fed from an adjacent 75 kVA xfmr. The 2005 renovation added a new electrical closet with a 277/480V panel-HB and 120/208V panel-LB fed via 75 kVA xfmr. Along with 120/208V panel-LK, for the kiln room space, these (4) 120/208V panels disbursed throughout the space provide a large number of circuit spaces available.

Aside from the main electrical room, sub-panels and the spaces in which they are located can be reconfigured, up to and including a new electrical closet, but it is recommended that the general location and layout stay consistent with the existing conditions.

Lighting:

It is recommended to bring the entire building up to current Emory design standards with new volumetric LED 2X4 troffer fixtures. This building will require (145) total new fixtures with a lighting control system. The intent of the lighting control system is to both provide localized control as well as code-compliance allowing whole building control outside of normal usage hours. There are a total of (9) rooms/spaces that will require basic scene setting and selection with (17) other enclosed spaces having wall-mounted toggle switches with integral occupancy sensors. For pricing purposes, care must be taken in the lighting design if the studio spaces as this may or may not be included in a consultants/contractors lighting package in lieu of a specialty lighting designer.

Emory University
301 FM Drive
Atlanta, Georgia 30322
An equal opportunity, affirmative action university

Tel 404.727.1764
Fax 404.727.2127

2